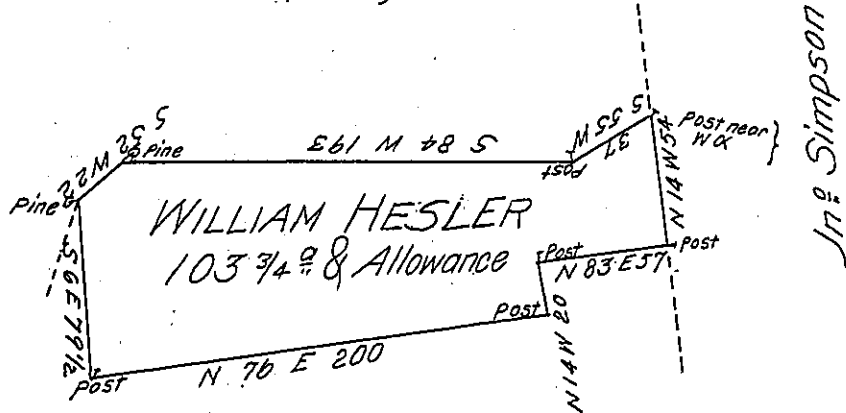


Robt King



Jno Simpson

Thomas Sutherland

Draught of a Tract of Land Situate in the Dry Valley in Buffeloe Township in the County of Northumberland Survey'd on the 13th day of September 1791 for William Hesler by Virtue of ~~his~~ his Warrant bearing date the 7th day of March 1774, Containing One Hundred & three Acres & three Quarters with the Allowance of Six P Cent for Roads &c.

Jo J Wallis D.S.

*To Danl Brodhead Esq^r }
Surveyor General }*

IN TESTIMONY that the above is a copy of the original remaining on file in the Department of Internal Affairs of Pennsylvania, made conformably to an Act of Assembly approved the 16th day of February, 1833, I have hereunto set my Hand and caused the Seal of said Department to be affixed at Harrisburg, this *twentyeighth* day of *February* 1905

Geo. D. Brown
Secretary of Internal Affairs.